



# THE PRACTITIONER LE PRATICIEN

## Country cardiograms case 35

Charles Helm, MD,  
CCFP  
Tumbler Ridge, BC

Correspondence to:  
Dr. Charles Helm,  
Box 1690, Tumbler Ridge  
BC V0C 2W0;  
drchelm@pris.bc.ca

This article has been peer  
reviewed.

**A** 68-year-old man presents to the emergency department of a remote British Columbia diagnostic and treatment centre with a 15-hour history of chest discomfort. He has no preceding cardiac history and no risk factors for coronary artery disease. Vital signs are normal. His resting electrocardiogram (ECG) is shown in Figure 1. A previous ECG,

taken 5 months earlier, is available (Fig. 2). Troponin T is elevated at 1.30 µg/L (a level > 0.1 µg/L indicates myocardial damage).

What is your ECG interpretation and management plan?

For the answer, see page 166.

Competing interests: None declared.

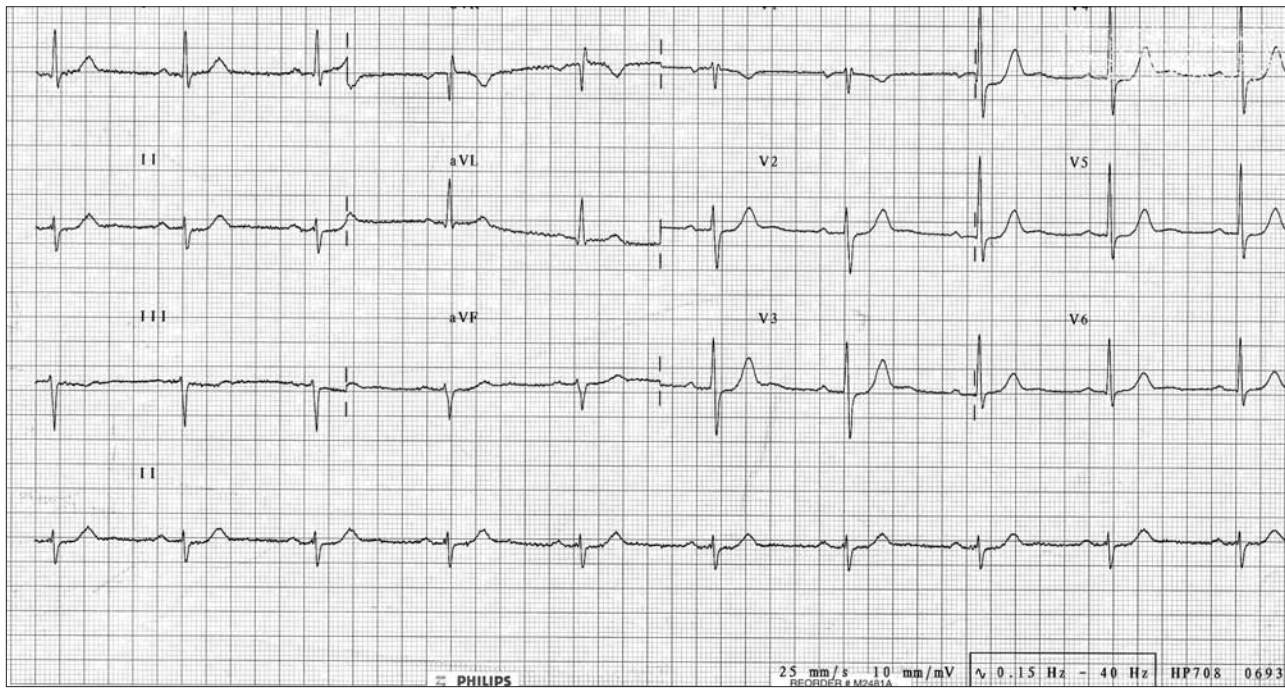


Fig. 1. Electrocardiogram of a 68-year-old man who presented to the emergency department with a 15-hour history of chest discomfort.

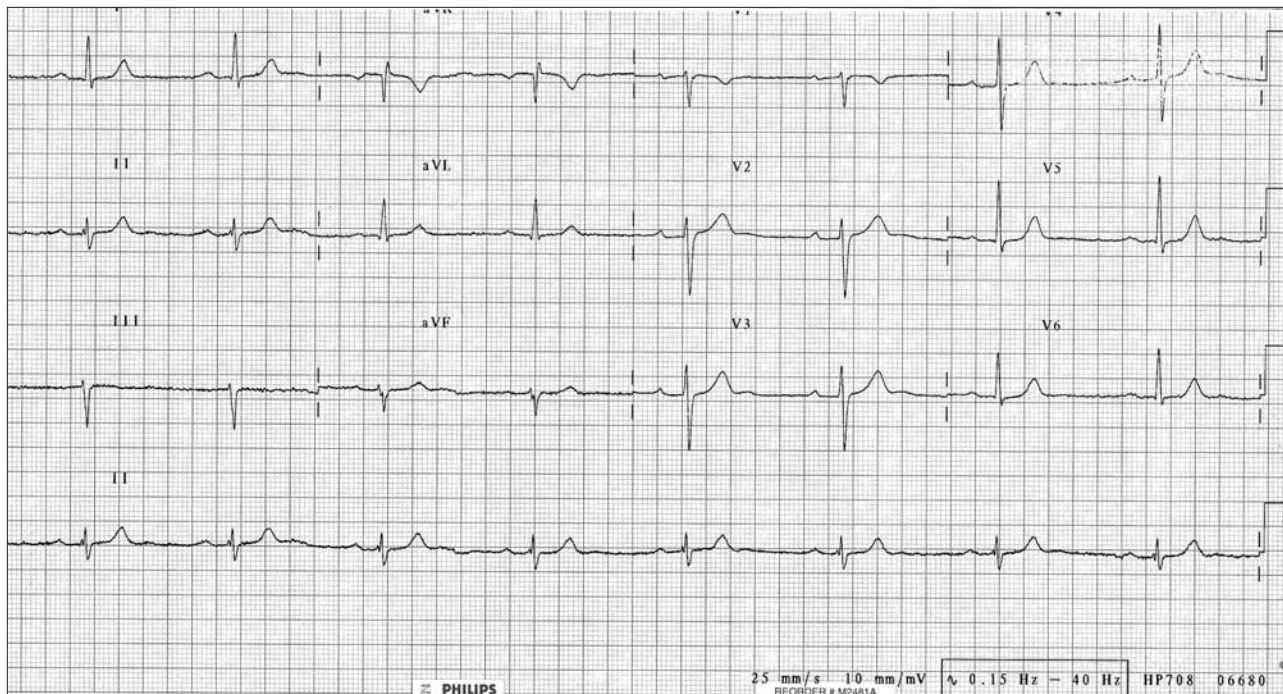


Fig. 2. Electrocardiogram taken 5 months before the patient's presentation to the emergency department.

## SERVICE INFORMATION

**Society of Rural Physicians of Canada (SRPC) members:** Subscription price included in membership fee.

**Nonmembers (2009 rates):** *Individuals:* Canada, \$103 (single copy, \$20); USA and elsewhere, US\$131. *Institutions:* Canada, \$166 (single copy, \$20); USA and elsewhere, US\$194 (single copy, US\$20). *Students* \$35 Canadian/US\$. Please contact the CMA Member Service Centre (see next paragraph) for other information. These rates include surface postage. Canadian subscribers please add 5% GST/13% HST (NS, NB, NL) as applicable.

All subscriptions are payable in advance. Payment should be made to the Canadian Medical Association (CMA) in the funds specified. MasterCard, VISA and American Express are accepted. Orders or requests for information should be addressed to: *CJRM*, CMA Member Service Centre, 1870 Alta Vista Dr., Ottawa ON K1G 6R7; 888 855-2555 x2307 (Canada/US) or 613 731-8610 x2307; fax 613 236-8864; cmamsc@cma.ca

**Missing issues:** Claims for missing issues must be made within 3 months of publication date (subject to availability).

**Change of address:** Send one month before effective date to the CMA Member Service Centre (see above).

**Reprints:** Bulk reprints of *CJRM* articles are available in minimum quantities of 50. For information please contact the reprint coordinator, Janis Murrey, 800 663-7336 or 613 731-8610 x2110; fax 613 565-7704; permissions@cma.ca.

**Copyright and Permissions:** Copyright for all material is held by the SRPC or its licensors, unless otherwise indicated. You may reproduce or otherwise use material from this journal only in accordance with Canadian copyright law and provided that credit is given to the original source. In the case of photocopying or other reprographic copying, please contact the Canadian Copyright Licensing Agency (Access Copyright): 800 893-5777; accesscopyright.ca. For any other use, including republishing, redistribution, storage in a retrieval system or transmission in any form or by any means, please contact Permissions Coordinator, CMA Publications, 1867 Alta Vista Dr., Ottawa ON K1G 5W8; fax 613 565-7704; permissions@cma.ca

**Indexing and Abstracting:** *CJRM* is available through the following services: MEDLINE/*Index Medicus*, Ovid Technologies, EbscoHost EJS, ProQuest Information and Learning Company, CAB Abstracts, Global Health and *Ubblich's International Periodicals Directory*. All articles published in *CJRM* are available free at the time of publication at [cma.ca/cjrm](http://cma.ca/cjrm).

**RuralMed:** Information on RuralMed (the SRPC Listserv) is available online at [srpc.ca](http://srpc.ca).

**Advertising: Classified ads:** Contact Bev Kirkpatrick or Deborah Rodd, *CJRM*, 1867 Alta Vista Dr., Ottawa ON K1G 5W8; 800 663-7336 or 613 733-8610 x2127/2314, fax 613 565-7488, advertising@cma.ca. See Classified Advertising section of *CJRM* for information on rates. **Display ads:** Contact Deborah Woodman (see preceding information); x2159.