

CAREER/CLASSIFIED ADVERTISING

CARRIÈRES ET ANNONCES CLASSÉES

The Ontario Human Rights Code prohibits discriminatory employment advertising.

The *Canadian Journal of Rural Medicine (CJRM)* is pleased to accept classified advertisements. The deadline is 1 month before issue date. Classified rates: 1 page \$1020; 2/3 page \$975; 1/2 page \$830; 1/3 page \$635; 1/4 page \$530; 1/8 page \$450. For a *CJRM* confidential-reply box number there is a \$20 charge (first insertion only). VISA, MASTERCARD AND AMERICAN EXPRESS ACCEPTED.

Advertisements should be sent to: Journal Advertising, *CJRM*, 1867 Alta Vista Dr., Ottawa ON K1G 5W8; tel 800 663-7336 or 613 731-8610 x2107/2041; fax 613 565-7488; advertising@cma.ca

Send all box number replies to: Box ____, *CJRM*, 1867 Alta Vista Dr., Ottawa ON K1G 5W8.

Le Code des droits de la personne de l'Ontario interdit la discrimination dans la publicité relative à l'emploi.

Le *Journal canadien de la médecine rurale* accepte volontiers les annonces classées. Celles-ci doivent être reçues au Journal au plus tard 1 mois avant la date de parution. Tarif des annonces classées : 1 page, 1020 \$; 2/3 page, 975 \$; 1/2 page, 830 \$; 1/3 page, 635 \$; 1/4 page, 530 \$; 1/8 page, 450 \$. L'emploi d'une boîte-réponse confidentielle au *JCMR* donne lieu à la perception d'un supplément de 20 \$ (pour la première insertion seulement). VISA, MASTERCARD ET AMERICAN EXPRESS ACCEPTÉS.

Le texte des annonces doit être adressé à : Annonces classées, *Journal canadien de la médecine rurale*, 1867, prom. Alta Vista, Ottawa ON K1G 5W8; tél. 800 663-7336 ou 613 731-8610 x2107/2041; fax 613 565-7488; advertising@cma.ca

Veuillez faire parvenir les réponses aux numéros de boîtes à l'adresse suivante : Boîte ____, *CJRM*, 1867, prom. Alta Vista, Ottawa ON K1G 5W8.



It's the Island calling

FAMILY PHYSICIAN OPPORTUNITIES

Vancouver Island, B.C.

Your career can be a demanding one ... so why not consider a location where the benefits are **naturally distracting**?

Family Practice opportunities are available in rural and urban locations, including **Port McNeill, Port Hardy, Campbell River, Comox Valley, Oceanside, Cowichan Valley** and on both **Cortes** and **Pender Islands**. The expansive natural beauty, access to amazing recreational activities and one of the best climates in Canada – Vancouver Island is a mecca for outdoor enthusiasts and offers a quality of life second to none!

An Alternative Payment contract is available in some locations and in designated communities, a range of attractive **Rural Benefits** are provided including:

- \$10,000 - \$20,000 Recruitment Incentive
- \$5,000 Relocation Reimbursement
- Fee-for-Service Premium
- Annual Retention Payment
- Annual CME Allowance
- Rural GP Locum Program

View all our current opportunities at www.viha.ca/careers/physicians or contact us directly for more information.

Sheila Leversidge, Physician Recruitment Coordinator
Tel: 250-740-6972 • Email: physicians@viha.ca

Discover Vancouver Island ... with unlimited possibilities for your career, family & future!



INTERIOR HEALTH OPPORTUNITIES

ANESTHESIOLOGIST: BC – Cranbrook. The Rural Physicians for British Columbia are providing a one-time incentive payment of \$100,000 for a 3-year return of service for a permanent anesthesiologist for this 74-bed regional facility, serving a catchment area of approximately 80,000 people. Shared responsibility of workload within Anesthesiology Department. The hospital has on-site CT, US and traveling MRI, and offers internal medicine, obstetrics and gynecology, general surgery, orthopedics, ophthalmology, ENT, pathology, psychiatry and radiology. Hours of work are negotiable and the compensation is fee-for-service so open for discussion. Multiple incentives: recruitment incentive \$20,000; retention fee premium 14%; retention flat fee \$12,240; relocation reimbursement. Cranbrook is surrounded by stunning scenery and boasts the most sunshine of anywhere in B.C. with unlimited summer and winter activities. For more information contact: email physicianrecruitment@interiorhealth.ca or view us online at our Web site www.betterhere.ca –RM-292b

FAMILY PHYSICIAN: BC – Ashcroft. Ashcroft Hospital and Community Health Centre is a Level 1 Community Hospital with four emergency beds, 24 extended care beds, and one respite care. Ashcroft (population: 1,664) rests along the banks of the Thompson River, deep in the heart of British Columbia's desert country. The town is set amid a spectacular recreational environment where hiking, golfing, and fishing thrive. Remuneration is fee-for-service \$300-350,000+/-, plus rural retention incentives and on-call availability payment. Overhead is around 20% and the office has a fully integrated EMR. For more information email physicianrecruitment@interiorhealth.ca or online www.betterhere.ca –RM-318

FAMILY PHYSICIAN: BC – Chase. Also known as the Gateway to the Shuswap, this lakeshore town offers an abundance of recreational opportunities. Located between Kamloops and Salmon Arm, Chase is a full-service community. You will be part of a multidisciplinary team providing primary care within an established electronic clinic. Hours of operation are Monday to Friday 8 am – 4 pm and the clinic is conveniently located across from the Health Centre. The three physicians rotate an on-call schedule for the emergency department. Remuneration is fee-for-service \$250-350,000+/-, plus RSA incentives and on-call availability payment. For more information email physicianrecruitment@interiorhealth.ca or view online www.betterhere.ca –RM-316

FAMILY PHYSICIAN: BC – Clearwater. Family physicians wanted to join the medical team in this beautiful community. Rural setting, relaxed pace of work, newer hospital, and an amazing provincial park as your backyard. Known for world-class recreation, enriched culture, and vibrant community life, Clearwater offers the balanced lifestyle you have been looking for. Enjoy working in a single group practice with electronic medical records, a modern acute care facility, and a 21-bed residential care facility. Payment structure is fee-for-service plus multiple incentives: The Rural Physicians for British Columbia incentive provides a one-time incentive payment of \$100,000 for a 3-year return of service; recruitment incentive \$20,000; retention fee premium 21.14%; retention flat fee \$18,482.40; and relocation reimbursement. For more information contact: email physicianrecruitment@interiorhealth.ca or view us online at our Web site www.betterhere.ca –RM-281a

FAMILY PHYSICIAN: BC – Lillooet. Five-physician, unopposed fee-for-service practice seeks sixth family physician with ER skills. Clinic group focus is on balance of work and lifestyle. Easy access to lower mainland, Whistler and interior of province. Call currently 1-in-5. Regular schedule includes one week off every fifth week. Full Rural Physician Recruitment and Retention benefits eligibility, including 38 days rural locum coverage for holidays. World-class wilderness at your doorstep for skiing, hiking, fishing, whitewater kayaking and mountain biking. Full service rural hospital with GP Surgeon and Anesthetist on staff. For more information email physicianrecruitment@interiorhealth.ca or view online at Web site www.betterhere.ca –RM-282b

FAMILY PHYSICIAN: BC – Logan Lake is situated in the Heart of the Highland Valley; a pristine natural environment of mountains, lakes and forests. Logan Lake is a growing, progressive and family-oriented community. This is a full service family practice with acute care clinic coverage. We have a turnkey operation with Wolf EMR and no startup costs for a new physician. Also, only 60 km away is a tertiary level hospital, Royal Inland Hospital, Kamloops. Remuneration is fee-for-service \$300-500,000+/-, plus rural retention incentives and on-call availability payment. For more information email physicianrecruitment@interiorhealth.ca or view online www.betterhere.ca –RM-317

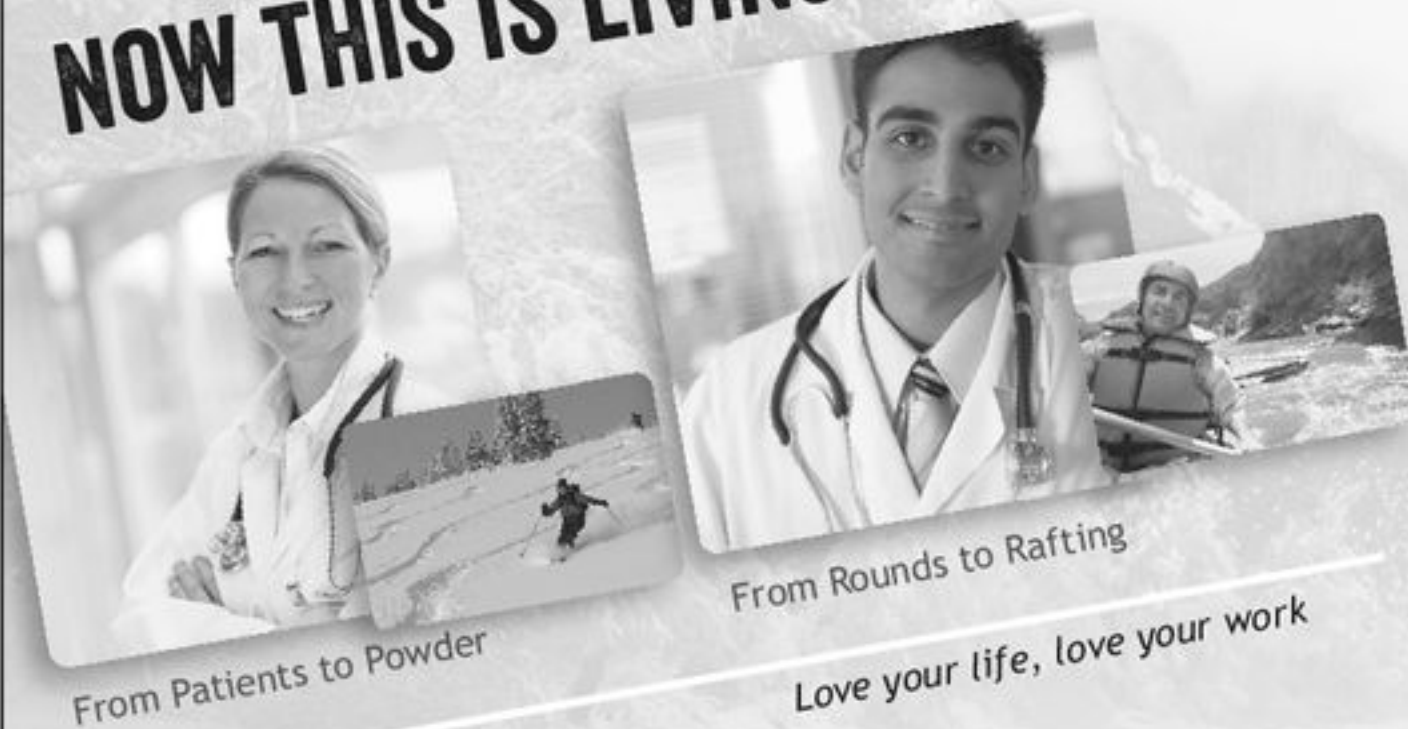
FAMILY PHYSICIANS: BC – Merritt. Rolling hills, sparkling lakes and over 2,030 hours of sunshine every year make Merritt a haven for four-season outdoor recreation. We have a need for family physicians in their choice of clinic. Nicola Valley Hospital and Health Centre is a 24-hour Level 1 community hospital with a 24-hour Emergency Room. Also, only 86 km away is a tertiary level hospital, Royal Inland Hospital, Kamloops. Remuneration is fee-for-service \$250-\$450,000+, rural retention incentives and on-call availability payment. For more information email physicianrecruitment@interiorhealth.ca or view online www.betterhere.ca –RM-311

FAMILY PHYSICIANS: BC – Nelson. The city of Nelson is seeking family physicians for their vibrant, active community. There are both part-time and full-time opportunities available in well-established clinics. With supportive colleagues to share the responsibilities of in-hospital patients, clinics operate with EMR systems, along with very efficient and friendly staff. Clinic physicians are very supportive to new colleagues establishing their practice and providing coverage for hospital inpatients. Specialist support is available at the local hospital, including internal medicine, ophthalmology, neurology and pediatrics, with additional services regionally. There is also the additional option of doing emergency room work and obstetric care. Room for growth! With its friendly people and scenic location among rivers, mountains, and lakes, the area offers a wide range of year-round outdoor recreational opportunities. Remuneration can be discussed when determining which clinic is a good match for you, plus multiple incentives: recruitment \$15,000; retention fee premium 11.62%; with a retention flat fee \$12,107.96. For more information email physicianrecruitment@interiorhealth.ca or view us online at our Web site www.betterhere.ca –RM-293

www.betterhere.ca



NOW THIS IS LIVING!



From Patients to Powder

From Rounds to Rafting

Love your life, love your work



northern health

the northern way of caring

Contact: Sheilagh or Charlene

Sheilagh.Wilson@northernhealth.ca • 250-649-7117

Charlene.Thomas@northernhealth.ca • 604-313-2711

WHY DO ^{more} PHYSICIANS CHOOSE NORTHERN BC?
because it's the best kept secret in Canada!

If you're looking for:

- Progressive and consultative work environments;
- Generous compensation;
- Lucrative rural incentives;
- Diverse patient population;
- Innovative primary care models;
- First Nation collaborative medicine;
- Generous relocation package

Your search is over!

We'd love the opportunity to share more details!

RM-324

REPRINTS

We have partnered with Sheridan Press!

To purchase commercial article reprints and e-prints or to request a quote, please contact

Matt Neiderer

Content Sales

Sheridan Content Services

800 635-7181 x8265

matt.neiderer@sheridan.com



Life's better here.

Family/General Practitioner

in Kaslo, British Columbia, Canada

Kaslo is located on Kootenay Lake and is surrounded by the Purcell and Selkirk Mountains, making the outdoor adventure options virtually limitless! We are seeking physicians for our Primary Health Care Centre, a multi-disciplinary IHA public clinic servicing a population of 2,000. Remuneration is highly competitive including multiple Rural Incentives with no overhead. Fee-for-service arrangements are also available depending on physician preference. Kaslo is one hour from a Regional hospital in Nelson, and supported by the High Acuity Response Team (HART) by ground and air. Please check out the detailed job postings on www.betterhere.ca.

If interested, please email physicianrecruitment@interiorhealth.ca.



Interior Health

betterhere.ca

RM-304a



Family Physicians

**It's more than a practice
.....it's a lifestyle!**

Northern Medical Services is seeking family physicians for full-time, itinerant contract and locum positions available in northern Saskatchewan. Experience practice in a remote setting and receive a competitive remuneration package (compensation in excess of **\$270,000-\$362,000** per annum depending upon qualifications and employment location) plus additional personal and professional benefits too numerous to mention. Locum rate: **\$1400-\$1765** per day plus on-call stipend.

Kerri Balon, Recruitment Coordinator
Northern Medical Services
Division of Academic Family Medicine
404, 333 – 25th Street E.
Saskatoon, SK Canada S7K 0L4
Tel 306 665-2898
Fax 306 665-6077
Toll Free 1-866-NMS-DOCS
(667-3627)
Email balon.nms@sasktel.net



www.northerndocs.com

RM-305



GENERAL PRACTITIONER

Neepawa, Manitoba

Beautiful Plains Community Medical Clinic

Growing small community seeks another GP with ED and OBS skills.

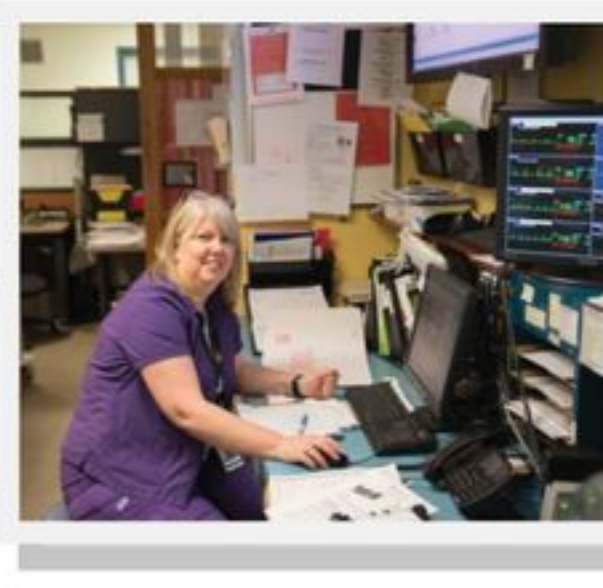
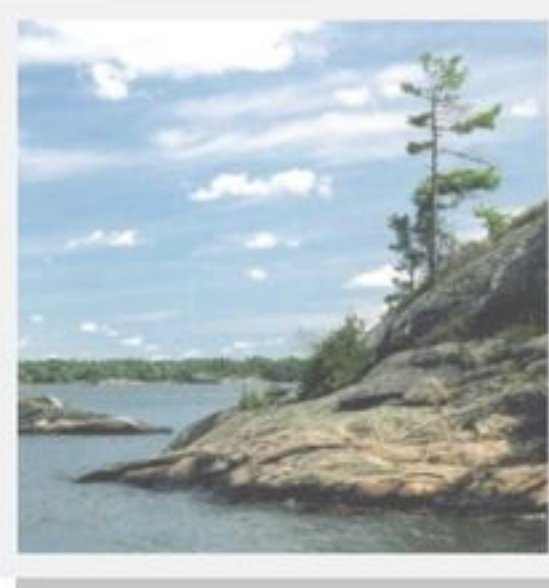
- Collegial, stable clinic group at community-owned clinic. Efficient staff with competitive overhead.
- GP community has maintained and is growing obstetrical and surgical services with regional support. Work is FFS.
- Call currently 1-in-6 weekdays and 1-in-6 weekends, looking to bring our numbers back to seven.
- Specialist support at secondary hospital 45 minutes away and tertiary care 2 hours away.
- Half hour drive from Riding Mountain National Park with hiking, back-country or resort opportunities.
- Two hours from Winnipeg.
- Community has many active groups in sports, arts and various interests.
- Surrounded by beautiful rolling prairies.
- Several competitive recruitment bonuses available.

If you are looking to move back to Manitoba, consider joining us in Neepawa.

Enquiries:

Dr. Sandra Wiebe or Dr. Brian Milligan
Beautiful Plains Community Medical Clinic
Box 70, Neepawa, MB R0J 1H0
Tel 204 476-3189
Email swiebe.md@gmail.com
or bemilligan@gmail.com

RM-320



MEDICAL CHIEF OF STAFF

Looking for an opportunity to play a key leadership role in a progressive and growing community hospital located on the shores of Southern Georgian Bay just 90 minutes north of Toronto?

Georgian Bay General Hospital Fast Facts: “Exceptional Care, Every Person, Every Time”

- ◆ Is the result of the joining of two outstanding organizations both with long histories of providing health care services to communities in Southern Georgian Bay dating back to the early 1900s
- ◆ Serving a population base of 55,000, swelling to more than 150,000 for six months of the year when seasonal residents return
- ◆ A modern 116-bed hospital with campuses located in Midland and Penetanguishene
- ◆ A well-structured and collegial medical staff numbering 110 physicians
- ◆ Teaching affiliation with the Northern Ontario School of Medicine, a partner in the Rural Ontario Medicine Program

Services that include:

- ◆ 24-hour Emergency Department, experiencing 45,000 visits annually and currently undergoing a \$12.7M expansion
- ◆ Inpatient Medicine, Surgery and Obstetrics services
- ◆ Planned expansion of a 20-bed inpatient mental health and addictions unit
- ◆ 8-station Dialysis unit, Ambulatory and Palliative care services
- ◆ Regional Complex Continuing Care & Rehabilitation Programs
- ◆ Diagnostic Imaging suite including, radiology, ultrasound, and CT
- ◆ Pharmacy and Laboratory services

Reporting to the GBGH Board of Directors, the Chief of Staff (COS) works closely with the executive and senior leadership teams – including the President & CEO, and the Vice President, Patient Care Services & CNE – to ensure the highest quality of medical care for the residents of Midland, Penetanguishene and surrounding area.

The ideal candidate will possess a progressive track record in medical leadership positions with a demonstrated appreciation for physician and multidisciplinary team challenges within the context of a medium-sized community based hospital and changing health system.

In addition, he/she must be eligible to practice medicine in Ontario and hold a Fellowship from the Royal College of Physicians and Surgeons of Canada (or equivalent) or Membership within the College of Family Physicians of Canada.

To explore this opportunity with us please submit your resume and cover letter by email to:

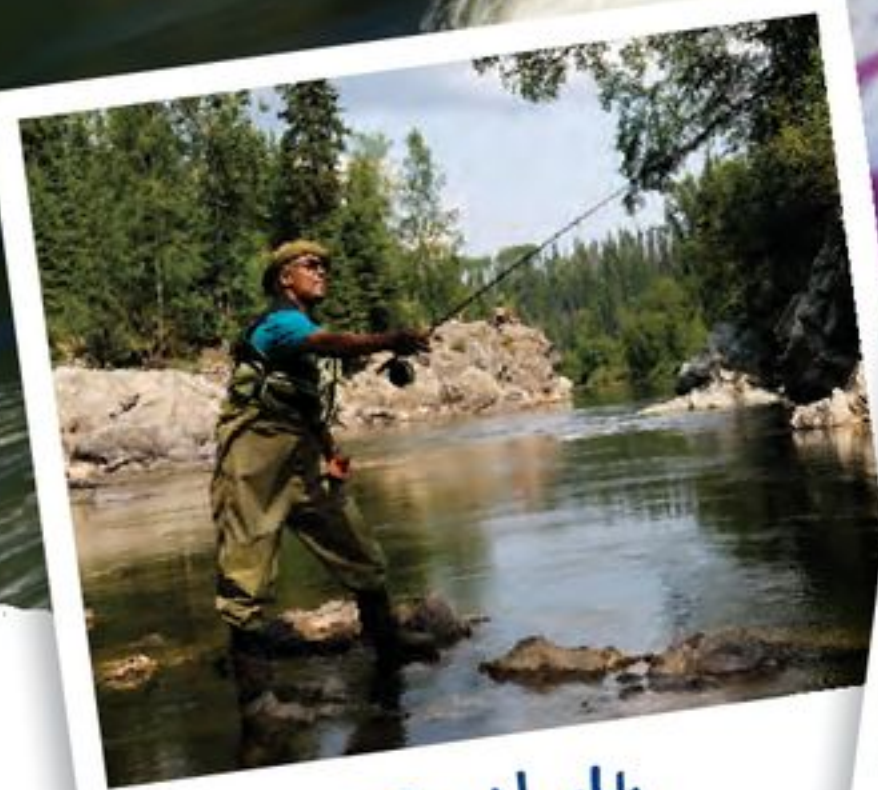
Neal Foot, Board Chair

Email ChiefofStaff2014@gbgh.on.ca

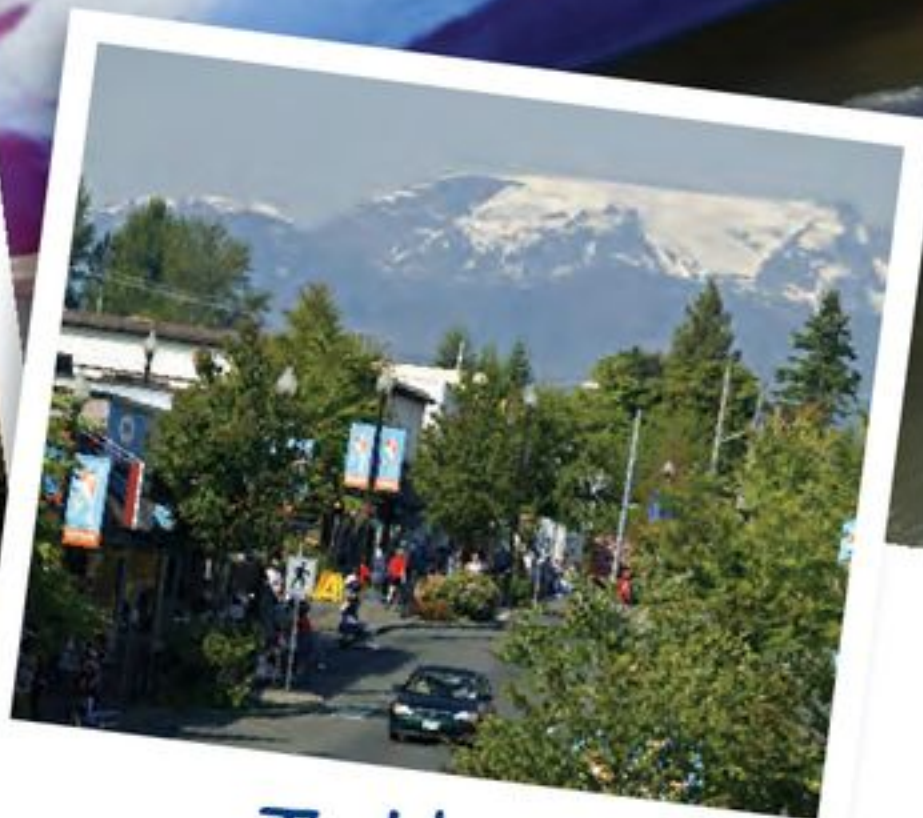
To learn more visit our website: www.gbgh.on.ca



Rural BC, the place to be.



The North



The Island

PRACTISE MEDICINE IN BRITISH COLUMBIA Enrich your career. Enhance your quality of life.

Join the hundreds of physicians who have moved to rural British Columbia (BC) to enjoy a quality of life that is envied around the world. Our physician services team can assist you with licensing and immigration, and match your skills and interests with exciting career opportunities. **Register online today!**

Meet with our team

Primary Care Today
May 7 - 10
Toronto, Ontario

BCCFP 2014 Spring Family
Medicine Conference
June 7 - 8
Vancouver, BC

Family Medicine Forum
November 12 - 15
Quebec City, Quebec

PHYSICIANS

NURSES

ALLIED HEALTH

healthmatchbc.org

FIND A JOB IN BC

Health Match BC is a free health professional recruitment service funded by the Government of British Columbia, Canada



RM-321

TOLL-FREE: 1.877.867.3061 • TEL: 1.604.736.5920 • EMAIL: welcome@healthmatchbc.org

Photo: Picture BC & Tim Swanky

Pr **ONBREZ* BREEZHALER***

Helping to treat your symptomatic patients is all in a day's work...



Demonstrated fast, 5-minute onset (FEV₁ improvement shown 5 minutes after first dose 0.1 L; $p < 0.001$, serial FEV₁ measurement)^{1†}



Maintained round-the-clock (24-hour) bronchodilation (LS mean FEV₁ (L) vs. placebo at week 12, $p < 0.001$; time points were 5 min, 30 min, 1 hr, 2 hrs, 4 hrs, 6 hrs, 12 hrs, 16 hrs, 22 hrs, and 24 hrs)^{1,2†‡}

Improved transition dyspnea index (LS mean TDI focal score at week 12, 1.34 vs. 0.11 for placebo, $p < 0.001$)^{1,3§}

ONBREZ* BREEZHALER* The only ONCE-DAILY LABA in COPD[¶]

Indication & clinical use:

ONBREZ* BREEZHALER* (indacaterol maleate) is a long-acting β_2 -agonist (LABA) indicated for long-term, once-daily, maintenance bronchodilator treatment of airflow obstruction in patients with chronic obstructive pulmonary disease (COPD), including chronic bronchitis and emphysema.

• Not indicated for the relief of acute deterioration of COPD, for asthma, or for use in patients under 18 years of age

Contraindications:

• Not indicated for treatment of asthma

Most serious warnings and precautions:

Asthma-related death: Increased risk of asthma-related death is considered a class effect with LABAs, including indacaterol maleate. ONBREZ* BREEZHALER* is not indicated for asthma.

Other relevant warnings and precautions:

- Not indicated for acute episodes of bronchospasm
- Increased risk of cardiovascular effects
- Caution in patients with cardiovascular disorders
- Caution in patients with convulsive disorders, thyrotoxicosis and patients who are unusually responsive to β_2 -adrenergic agonists
- Risk of hypokalemia and hyperglycemia
- Paradoxical bronchospasm
- Immediate hypersensitivity
- Should not be used in patients with acutely deteriorating COPD
- Should not be used concomitantly with other LABAs
- May inhibit labour

For more information:

Please consult the Product Monograph at www.novartis.ca/asknovartispharma/download.htm?res=onbrez%20breezhaler_scrip_e.pdf&resTitleId=482 for important information relating to adverse events, drug interactions, and dosing information which have not been discussed in this piece. The Product Monograph is also available by calling the Medical Information department at 1-800-363-8883.

FEV₁: forced expiratory volume in 1 second; LS: least square; TDI: transition dyspnea index.
† B2355: A 12-week, multicentre, randomized, double-blind, placebo-controlled, parallel-group study assessing the safety and efficacy of ONBREZ* BREEZHALER* 75 mcg once daily vs. placebo in patients with COPD (n=318).

‡ From a subset of 239 patients in B2355, data shown is ONBREZ* BREEZHALER* vs. placebo, respectively: **5 min:** 1.56 vs. 1.39; **30 min:** 1.57 vs. 1.38; **1 hr:** 1.56 vs. 1.38; **2 hrs:** 1.56 vs. 1.37; **4 hrs:** 1.51 vs. 1.35; **6 hrs:** 1.48 vs. 1.33; **12 hrs:** 1.43 vs. 1.29; **16 hrs:** 1.39 vs. 1.24; **22 hrs:** 1.44 vs. 1.27; **24 hrs:** 1.48 vs. 1.34.

§ B2354: A 12-week, multicentre, randomized, double-blind, placebo-controlled, parallel-group study assessing the safety and efficacy of ONBREZ* BREEZHALER* 75 mcg once daily vs. placebo in patients with COPD (n=323).

¶ Comparative clinical significance has not been established.



Novartis Pharmaceuticals Canada Inc.
Dorval, Québec H9S 1A9
www.novartis.ca
☎ 514.631.6775 ☎ 514.631.1867

* ONBREZ and BREEZHALER are registered trademarks.
Product Monograph available on request.
Exp: 05/2014
© Novartis Pharmaceuticals Canada Inc. 2013



References: 1. ONBREZ* BREEZHALER* Product Monograph. Novartis Pharmaceuticals Canada Inc., October 24, 2012. 2. Data on file. Novartis Pharmaceuticals Canada Inc. Study B2355. 3. Data on file. Novartis Pharmaceuticals Canada Inc. Study B2354.



Once-daily
**onbrez*
breezhaler***
(indacaterol maleate inhalation powder)