



srpc.ca
cjrjm.ca

SCIENTIFIC EDITOR
RÉDACTEUR SCIENTIFIQUE
PETER HUTTEN-CZAPSKI, MD
Haileybury, ON.

ASSOCIATE SCIENTIFIC EDITOR
RÉDACTEUR SCIENTIFIQUE ASSOCIÉ
GORDON BROCK, MD
Temiscaming, QC.

MANAGING EDITOR
DIRECTRICE DE LA RÉDACTION
SUZANNE KINGSMILL, BA, BSc, MSc
Toronto, ON.

ASSISTANT EDITORS
RÉDACTEURS ADJOINTS
MIKE GREEN, MD
Kingston, ON.

MARY JOHNSTON, MD
Blind Bay, BC

TRINA M. LARSEN SOLES, MD
Golden, BC

SARAH GILES, MD
Kenora, ON

JAMES ROURKE, MD
Ottawa, NL

GABE WOOLLAM, MD
Happy Valley-Goose Bay, NL

Canadian Journal of Rural Medicine (CJRM) is owned by the Society of Rural Physicians of Canada (SRPC). It appears in Winter, Spring, Summer and Fall. It is printed by The Lowe-Martin Group, Ottawa, ON.

Address all correspondence to:
Editor, CJRM
manedcjrjm@gmail.com

CJRM is indexed in Emerging Sources Citation Index, MEDLINE/Index Medicus, Web of Science

Publications Mail Agreement no. 4138705.
Send address changes to: SRPC, Box 893, Shawville, QC J0X 2Y0
819-647-7054
819-647-1949; fax: 819-647-2485
info@srpc.ca

ISSN 12037796

All prescription drug advertisements have been cleared by the Pharmaceutical Advertising Advisory Board.

Printed by The Pontiac Printshop Ltd., Shawville, QC

© 2023 Society of Rural Physicians of Canada
| Published by Wolters Kluwer - Medknow



Canadian Journal

Journal canadien

of
**Rural
Medicine**

de la
**médecine
rurale**

Vol. 28, No. 4, FALL 2023 / AUTOMNE 2023

EDITORIALS / ÉDITORIAUX

- 159 Fostering growth — *Peter Hutten-Czapski*
- 160 Favoriser la croissance — *Peter Hutten-Czapski*
- 161 President's Message – Strengthening partnerships — *Sarah Lespérance, MD, CCFP, FCFP, FRRMS*
- 162 Message de la présidente. Renforcer les partenariats — *Sarah Lespérance, MD, CCME, FCME, FRRMS*

ORIGINAL ARTICLES / ARTICLES ORIGINAUX

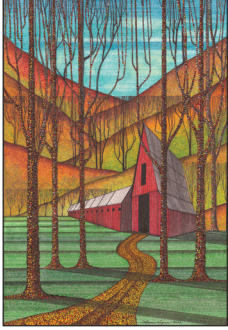
- 163 New insights on rural doctors' clinical courage in the context of the unfolding COVID-19 pandemic — *David Campbell, MBBS, FACRRM, DRANZCOG, DCH, FRACGP, Susan Williams, BSc(Hons), PhD, Jill Konkin, BA(Hons), MCISc, MD, CCFP, FCFP, FRRMS, Isabella White, MBBS, FRACGP, Ian Couper, BA, MBChB, MFamMed, FCFP (SA), Ruth Stewart, MBBS, PhD, FACRRM, DRANZCOG(adv), Lucie Walters, MBBS, PhD, DCH, DRANZCOG, FRACGP, FACRRM*
- 170 Utilisation and barriers of PoCUS in a rural emergency department – A quality improvement project — *Jamie E. C. Vander Ende, MD, MPT, BHK, Ryan A. Labossiere, MD, BSc, Joshua Lawson, PhD*
- 179 Enhanced recovery after surgery reduces length of stay after colorectal surgery in a small rural hospital in Ontario — *Hector A. Roldan, MD, FRCS, FACS, Andrew Robert Brown, MD, CCFP, Jane Radey, RN, CPN(C), RNEA, John C. Hogenbirk, MSc, Lisa Rosalie Allen, PhD*
- 190 Rendezvous procedure, a simultaneous endoscopic retrograde cholangiopancreatography and laparoscopic cholecystectomy for choledocholithiasis, in a rural surgical program in Northwest Ontario — *Matt Parkinson, MD, MSc, FRCS(C), Jenna Poirier, BSc, Erin Belmore, CHIM, CCCS, Len Kelly, MD, MClIn Sci, FCFP, FRRM*

THE OCCASIONAL

- 195 The Occasional intralipid emulsion therapy — *Mary Ollier, MA, Sarah Giles, MD, Sophie Gosselin, MD, FRCP*

LEARNERS' CORNER

- 201 Gone with air and with water — *Daniel Blaine Pearce, BN*
- 203 A resident physician's reflection on rural medicine — *Evelyne Guay, MD*



Red Barn Shadows 2022
16" x 12" pen and ink on paper
(pointillism)
by Lawrie Dignan

www.changing-realities.com

The overall stylization of this image is greatly influenced by the Master works of Disney Animator, Eyvind Earl. Throughout my working career with the Ministry of Highways, I was stationed in many rural farming communities where barns and farmyards were prevalent. I have derived much subject material from these memories.

ARE YOU AN AUTHOR OR A RESEARCHER?

Do you have an original research paper ready to submit?

Are you working on a research paper and looking to have it published?

Submit your piece to the Canadian Journal of Rural Medicine.

Send us your research papers that have been archived, dust them off and send them in!

We welcome original research studies, exciting case reports and literature reviews with a rural medicine edge. (3500 words or less)

Submissions will be peer-reviewed for potential publication.

Learn more and find instructions online.

www.srpc.ca/cjrm

RURAL LISTSERV

SRPC members are welcome to join at any time.

The Listserv is a network of physicians in rural practice, allied healthcare providers, and academia interested in rural medicine. RURALMED has a Canadian focus, and its purpose is to support rural practitioners, whether rural G.P./FPs or rural specialists, by providing a forum for discussion, debate, and the exchange of ideas and information.

Contribute to, or follow the email discussions in the following groups.

**RuralAnesthesia | RuralMed | MedRurale |
StudentRuralMed**

Learn more or subscribe online.

www.srpc.ca/ruralmed