

- No conflict of interests to declare

1

Specialists Section
Society of Rural Physicians
Canada
Specialists in Rural Canada

2

Purpose/History of Committee

- Uniqueness
- Common issues
- Stronger voice
- Etc

- Halifax, 2008

3

Steering committee

- Caroline Sheppard, Student, U of Calgary, Alberta.
- Jeremy Hillyard, Surgeon, Antigonish, N.S.
- Dan Reilly, Obstetrician, Ont
- Judith Rogers, Surgeon, Corner Brook, N.L.
- Matthew Crowson, ENT Surgeon, NWT
- Kweku Dankwa, Pathologist, St Anthony, NL

4



5

Activities

- Conference calls X 4
- Participation in R&R
- Representation of Rural Specialists at council meetings
- Representation of Rural Specialists at national bodies as needed

6

Issues

- Research Network
- RCPSC training programs to include a minimum amount of time for training in rural/remote areas
- Rural physicians locum service
- Province-wide audiovisual access to university rounds
- Policy of mandatory tertiary care support
- Programs that have a mandatory rural/regional/remote training component
- Outreach clinics
- Periodic sabbaticals to upgrade skills
- Quality control/assurance in medical practice
- Recruitment and retention as a recurring underlying theme
- Participation in the rural/remote conferences, St John's, April 2018 and now Halifax 2019

7

Transformation of issues

- It is hoped that the issues would be fashioned as policy documents and presented to the SRPC Executive for action.

8

Pending issues

- The Royal College of Physicians and Surgeons to ensure that training programs include minimum amount of training in rural/remote areas.
- University programs to have a mandatory rural/regional/remote section for participation by rural physicians.
- Province-wide audiovisual access to university rounds.
- Periodic sabbaticals to upgrade skills.
- Policy of mandatory polite tertiary care
- Outreach clinics should include the active participation of local physicians/providers.

9

Challenge(s)

- The primary challenge facing the committee is to transform the issues into action soon

10

Future

- Increasing our membership
- Transforming our issues into action.

11

- We whole heartedly welcome your contributions and support.

12

Contact information

- Kweku.dankwa@lghealth.ca
- (709) 454-0134 work phone

- Thank you.

13

- Rural Road Map

14



15



16

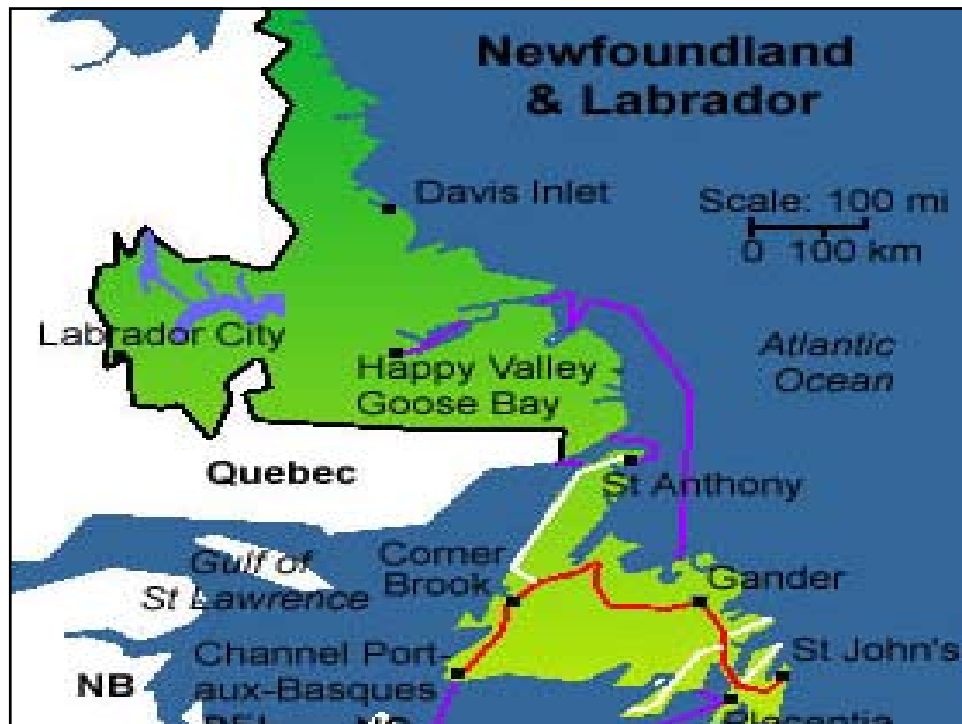
- Areas of interest/concern:

17

Location of services

- Population base
- Remoteness
 - Distance from services
- Accessibility to transportation (by air, land and sea/water)
 - Availability of transport services
 - Frequency of movement/execution/delivery of service

18



19

Provision of services

- What type of services available
- How long (duration) are the services provided e.g. for a few hours or a day etc
- How frequently are services provided e.g. once a week, month , year etc or as needed

20



21

Support for the services

- Physical structure where necessary
- Human resources
- Equipment
- Government - federal and provincial
- The colleges- Family Medicine and the Royal College
- Medical Schools
- Provincial licensing authorities

22



23

Human resources

- Medical
- Non-medical/allied

A blue gradient background with a silhouette of mountains at the bottom.

24

Medical staff

- Specialists for the services-
 - Available service
 - Attraction to them
 - Retaining the staff

25

Recruiting

- Usual adverts
- Direct personal contacts
- Exposure to the services by visiting professionals
- Training programs incorporating rural areas

26

Retention of staff

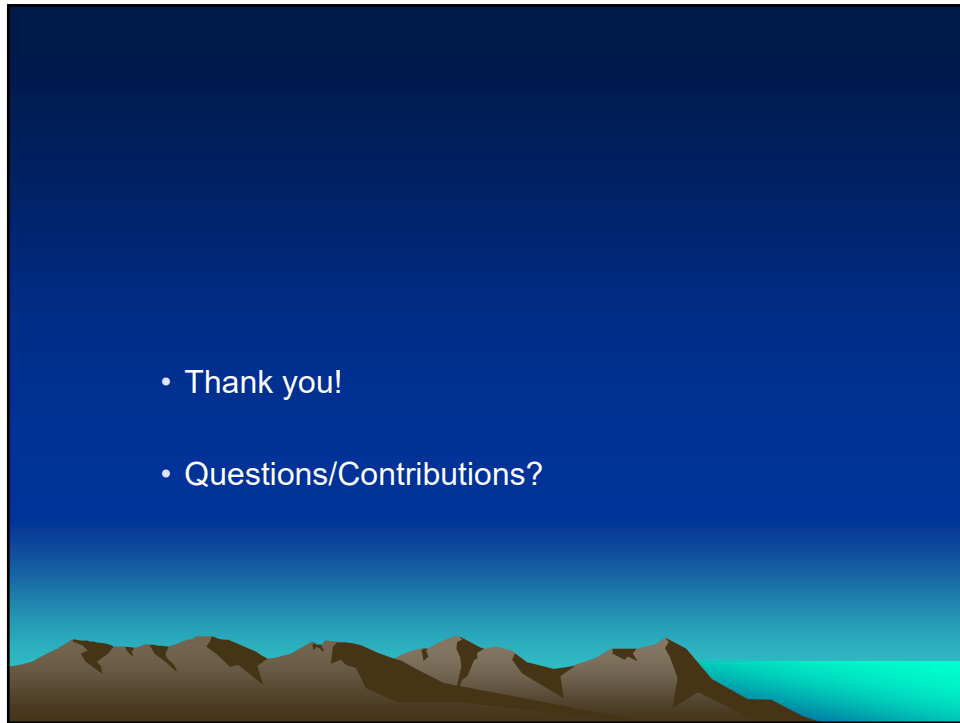
- Reasonable work schedules
- Spousal support/issues
- Support from tertiary centers to clinicians in rural communities
- Opportunities for retraining/refreshing skills
- Remuneration

27

Remuneration

- Salaried
- Fee for service
- Blended system
- Unified payment schedule adopted by all

28



29